

# REPUBLIK ÖSTERREICH

**AUSTRO CONTROL GmbH**  
LUFTFAHRTINFORMATIONSDIENST  
Schnirchgasse 17  
1030 Wien  
AUSTRIA



**AUSTRO CONTROL GmbH**  
AERONAUTICAL INFORMATION SERVICE  
Schnirchgasse 17  
1030 Wien  
AUSTRIA

Phone: +43 5 1703/3211  
Telefax: +43 5 1703/2056  
AFT: LOWWYNYX  
e-mail: [nof@astrocontrol.at](mailto:nof@astrocontrol.at)

REPUBLIC OF AUSTRIA

AIC A 10/24

27 SEP 2024

---

---

This AIC includes 6 pages.

This AIC replaces AIC A 6/23.

## RNP AR approach procedure RWY 16 at Wien-Schwechat airport (LOWW)

This AIC is issued to publish 2 RNP AR procedures: RNP N RWY 16 (AR) and RNP E RWY 16 (AR).

These RNP AR approaches have been established for noise measuring purposes. Operators holding an RNP AR authorization are invited to request these approaches on ATC frequency.

Clearance for the RNP AR approach will be granted as often as traffic situation and noise abatement restrictions permit.

Aircraft cleared for one of the approaches may expect radar vectors to the relevant IAF at an altitude coincident with the first vertical constraint of the procedure.

These procedures are available for all interested operators.

These procedures do not require special authorization from Austro Control. However, this does not relieve the operator/pilot of the obligation to obtain an approval / acceptance to conduct RNP AR procedures from the competent national aviation authority of the state of the operator/pilot.

They are established using design criteria from ICAO Doc 9905.  
Both aircraft and flight crews must comply with applicable regulatory requirements.

The relevant charts and coding tables are published on the following pages of this AIC.

For further information or assistance, please contact: [special.procedures@astrocontrol.at](mailto:special.procedures@astrocontrol.at)

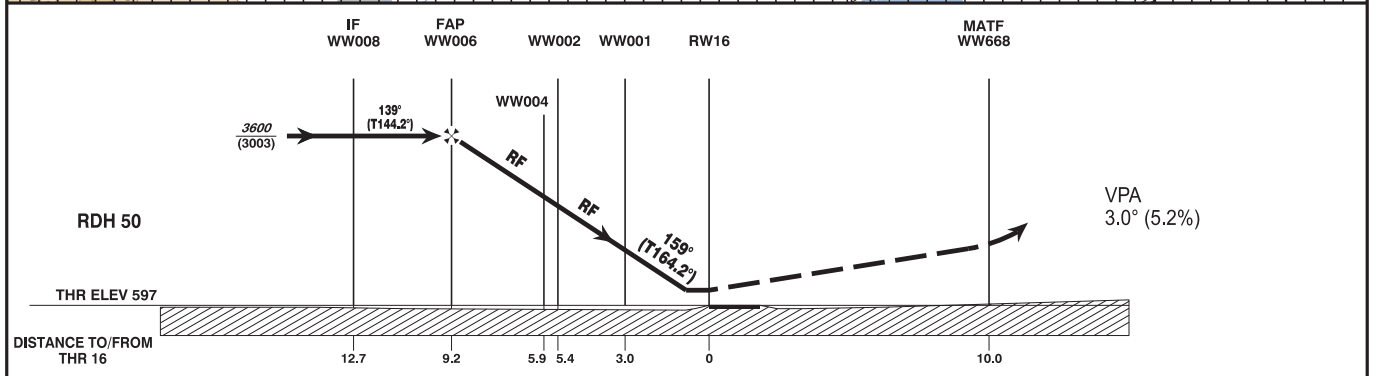
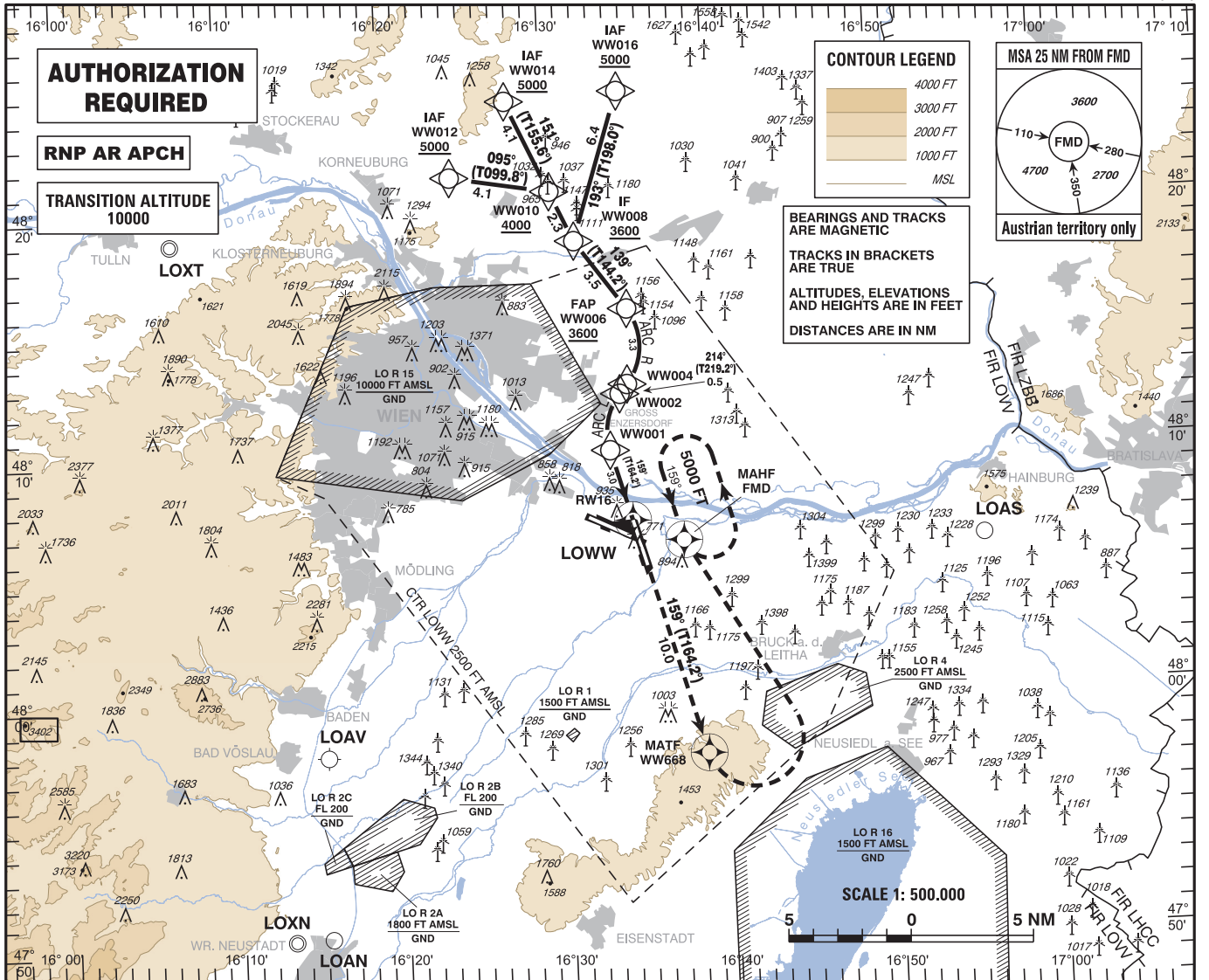
**INSTRUMENT APPROACH CHART - ICAO**

VAR 5° E

AD ELEV 600 FT  
THR 16 ELEV 597 FT  
HGT RELATED TO THR ELEV

RADAR	118.775	125.175	129.050	134.675	136.250
ARRIVAL	119.800	134.125			
TOWER	119.400	123.800	124.475		
GROUND	121.600	121.775			
ATIS	122.955				

**WIEN-SCHWECHAT (LOWW)**  
ÖSTERREICH AUSTRIA  
RNP N RWY 16 (AR)



**MISSED APPROACH: CLIMB STRAIGHT AHEAD, AT WW668 TURN LEFT DIRECT TO FMD; CLIMB TO 5000 FT AMSL AND HOLD.**

OCA (OCH) In FT	A	B	C	D
	1200 (610)			
RNP 0.3	1200 (610)			

GS (KT)	80	100	120	140	160	180
FT / MIN	420	530	640	740	850	960

- GNSS and IRS required
- DME/DME, LOC and VOR/DME updating not authorized
- For uncompensated Baro-VNAV systems, procedure not authorized below AD temp -7°C
- VPA exceeds 3.5° above +50°C

Proposed Instrument Approach Procedure Coding Table Wien-Schwechat RNP N RWY 16 (AR) - via WW014/WW016										
Path Terminator	Waypoint				Course/ Track ° MAG (° True)	DIST NM	Turn Direction	ARC Centre Waypoint		ARC Radius NM
	Identifier	Type	Flyover	Coordinates				Identifier	Coordinates	
IF	WW014	IAF	no	N482428.90 E0162747.08						
IF	WW016	IAF	no	N482444.26 E0163441.48						
TF	WW008	IF	no	N481840.54 E0163143.98	151° (155.6°) 193° (198.0°)	6.4				
TF	WW006	FAP	no	N481550.24 E0163447.85	139° (144.2°)	3.5				
RF	WW004		no	N481245.07 E0163439.18		3.3	right	WW013	N481421.40 E0163142.56	2.54
TF	WW002		no	N481221.84 E0163410.80	214° (219.2°)	0.5				
RF	WW001		no	N481004.33 E0163328.07		2.4	left	WW011	N481045.54 E0163707.34	2.54
TF	RW16		yes	N480711.22 E0163441.40	159° (164.2°)	3.0				
TF	WW668	MATF	yes	N475734.06 E0163844.80	159° (164.2°)	10.0				
DF	FMD	MAHF	yes	N480618.41 E0163745.35			left			
Waypoint	Constraints		RNP Value NM	Navigation Specification	Remarks					
Identifier	Level	Speed								
WW014	A5000+		1.0	RNP AR APCH						
WW016	A5000+		1.0	RNP AR APCH						
WW008	A3600+	K210-	1.0	RNP AR APCH						
WW006	A3600+	K185-	0.3	RNP AR APCH						
WW004			0.3	RNP AR APCH						
WW002			0.3	RNP AR APCH						
WW001			0.3	RNP AR APCH						
RW16			0.3	RNP AR APCH						
WW668			-	RNP APCH	Missed Approach based on RNP APCH Criteria					
FMD	A5000+		-	RNP APCH	Missed Approach based on RNP APCH Criteria					
<b>RNAV Holding</b>										
Holding Point	Inbound Track ° True	Inbound Track ° MAG	Turn Direction	MAX IAS	Minimum Holding Altitude FT MSL / FL	Time	DIST NM	Remarks		
FMD	163.6°	159°	left		A5000	1 MIN				

**Proposed Instrument Approach Procedure Coding Table  
Wien-Schwechat RNP N RWY 16 (AR) - via WW012**

Path Terminator	Waypoint				Course/ Track ° MAG (° True)	DIST NM	Turn Direction	ARC Centre Waypoint		ARC Radius NM
	Identifier	Type	Flyover	Coordinates				Identifier	Coordinates	
IF	WW012	IAF	no	N482126.17 E0162415.22						
TF	WW010		no	N482044.17 E0163020.02	095° (099.8°)					
TF	WW008	IF	no	N481840.54 E0163143.98	151° (155.6°)	2.3	right			
TF	WW006	FAP	no	N481550.24 E0163447.85	139° (144.2°)	3.5				
RF	WW004		no	N481245.07 E0163439.18		3.3	right	WW013	N481421.40 E0163142.56	2.54
TF	WW002		no	N481221.84 E0163410.80	214° (219.2°)	0.5				
RF	WW001		no	N481004.33 E0163328.07		2.4	left	WW011	N481045.54 E0163707.34	2.54
TF	RW16		yes	N480711.22 E0163441.40	159° (164.2°)	3.0				
TF	WW668	MATF	yes	N475734.06 E0163844.80	159° (164.2°)	10.0				
DF	FMD	MAHF	yes	N480618.41 E0163745.35			left			

Waypoint Identifier	Constraints		RNP Value NM	Navigation Specification	Remarks
	Level	Speed			
WW012	A5000+		1.0	RNP AR APCH	
WW010	A4000+		1.0	RNP AR APCH	
WW008	A3600+	K210-	1.0	RNP AR APCH	
WW006	A3600+	K185-	0.3	RNP AR APCH	
WW004			0.3	RNP AR APCH	
WW002			0.3	RNP AR APCH	
WW001			0.3	RNP AR APCH	
RW16			0.3	RNP AR APCH	
WW668			-	RNP APCH	Missed Approach based on RNP APCH Criteria
FMD	A5000+		-	RNP APCH	Missed Approach based on RNP APCH Criteria

**RNAV Holding**

Holding Point	Inbound Track ° True	Inbound Track ° MAG	Turn Direction	MAX IAS	Minimum Holding Altitude FT MSL / FL	Time	DIST NM	Remarks
FMD	163.6°	159°	left		A5000	1 MIN		

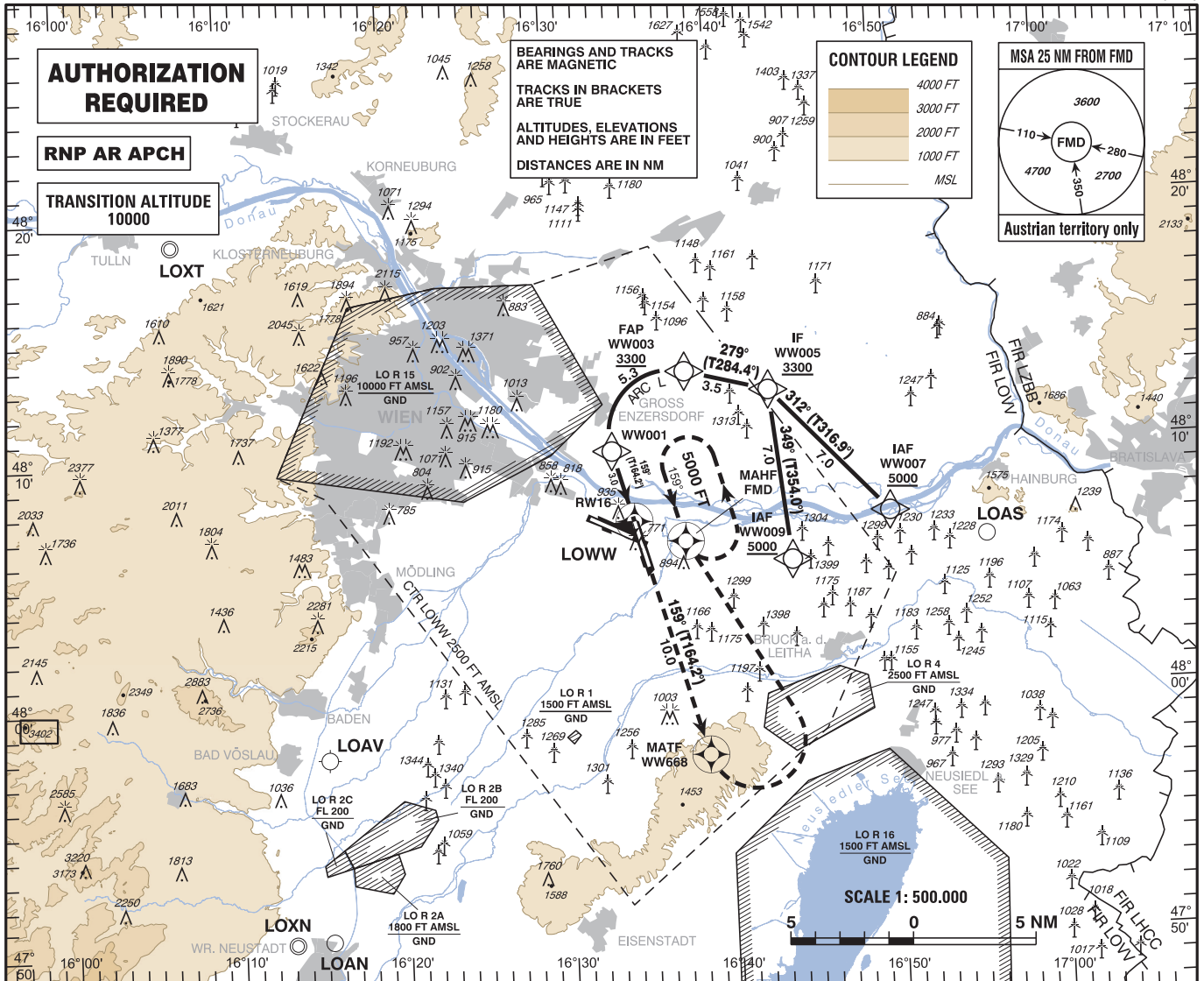
**INSTRUMENT APPROACH CHART - ICAO**

VAR 5° E

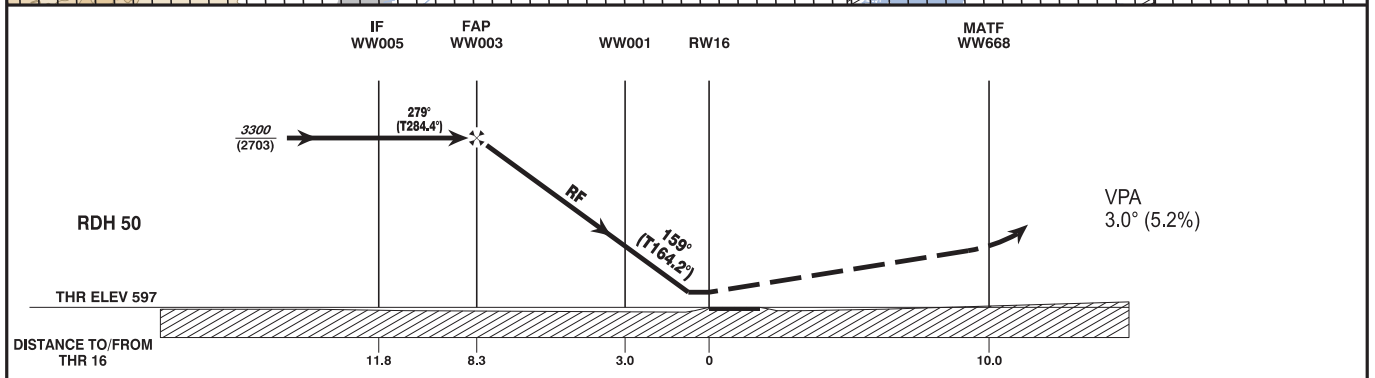
AD ELEV 600 FT  
THR 16 ELEV 597 FT  
HGT RELATED TO THR ELEV

RADAR	118.775	125.175	129.050	134.675	136.250
ARRIVAL	119.800	134.125			
TOWER	119.400	123.800	124.475		
GROUND	121.600	121.775			
ATIS	122.955				

**WIEN-SCHWECHAT (LOWW)**  
ÖSTERREICH AUSTRIA  
RNP E RWY 16 (AR)



CHANGE: EDITORIAL



**MISSED APPROACH:** CLIMB STRAIGHT AHEAD, AT WW668 TURN LEFT DIRECT TO FMD; CLIMB TO 5000 FT MSL AND HOLD.

OCA (OCH) In FT	A	B	C	D
RNP 0.3	1200 (610)			

GS (KT)	80	100	120	140	160	180
FT / MIN	420	530	640	740	850	960

- GNSS and IRS required
- DME/DME, LOC and VOR/DME updating not authorized
- For uncompensated Baro-VNAV systems, procedure not authorized below AD temp -7°C
- VPA exceeds 3.5° above +50°C

Proposed Instrument Approach Procedure Coding Table Wien-Schwechat RNP E RWY 16 (AR)										
Path Terminator	Waypoint				Course/ Track ° MAG (° True)	DIST NM	Turn Direction	ARC Centre Waypoint		ARC Radius NM
	Identifier	Type	Flyover	Coordinates				Identifier	Coordinates	
IF	WW009	IAF	no	N480523.87 E0164413.08						
IF	WW007	IAF	no	N480714.77 E0165016.06						
TF	WW005	IF	no	N481221.09 E0164307.62	349° (354.0°) 312° (316.9°)	7.0				
TF	WW003	FAP	no	N481313.20 E0163803.37	279° (284.4°)	3.5				
RF	WW001		no	N481004.33 E0163328.07		5.3	left	WW011	N481045.54 E0163707.34	2.54
TF	RW16		yes	N480711.22 E0163441.40	159° (164.2°)	3.0				
TF	WW668	MATF	yes	N475734.06 E0163844.80	159° (164.2°)	10.0				
DF	FMD	MAHF	yes	N480618.41 E0163745.35			left			
Waypoint	Constraints		RNP Value NM	Navigation Specification	Remarks					
Identifier	Level	Speed								
WW009	A5000+		1.0	RNP AR APCH						
WW007	A5000+		1.0	RNP AR APCH						
WW005	A3300+	K210-	1.0	RNP AR APCH						
WW003	A3300+	K185-	0.3	RNP AR APCH						
WW001			0.3	RNP AR APCH						
RW16			0.3	RNP AR APCH						
WW668			-	RNP APCH	Missed Approach based on RNP APCH Criteria					
FMD	A5000+		-	RNP APCH	Missed Approach based on RNP APCH Criteria					
RNAV Holding										
Holding Point	Inbound Track ° True	Inbound Track ° MAG	Turn Direction	MAX IAS	Minimum Holding Altitude FT MSL / FL	Time	DIST NM	Remarks		
FMD	163.6°	159°	left		A5000	1 MIN				